

PART SE 1/4 SEC 23, SW 1/4 SEC 24 & NW 1/4 SEC 25, T.5N., R.1W., S.L.B. & M.

352

# SPRING CREEK ESTATES SUBDIVISION NO. 2

LOTS 3 - 8

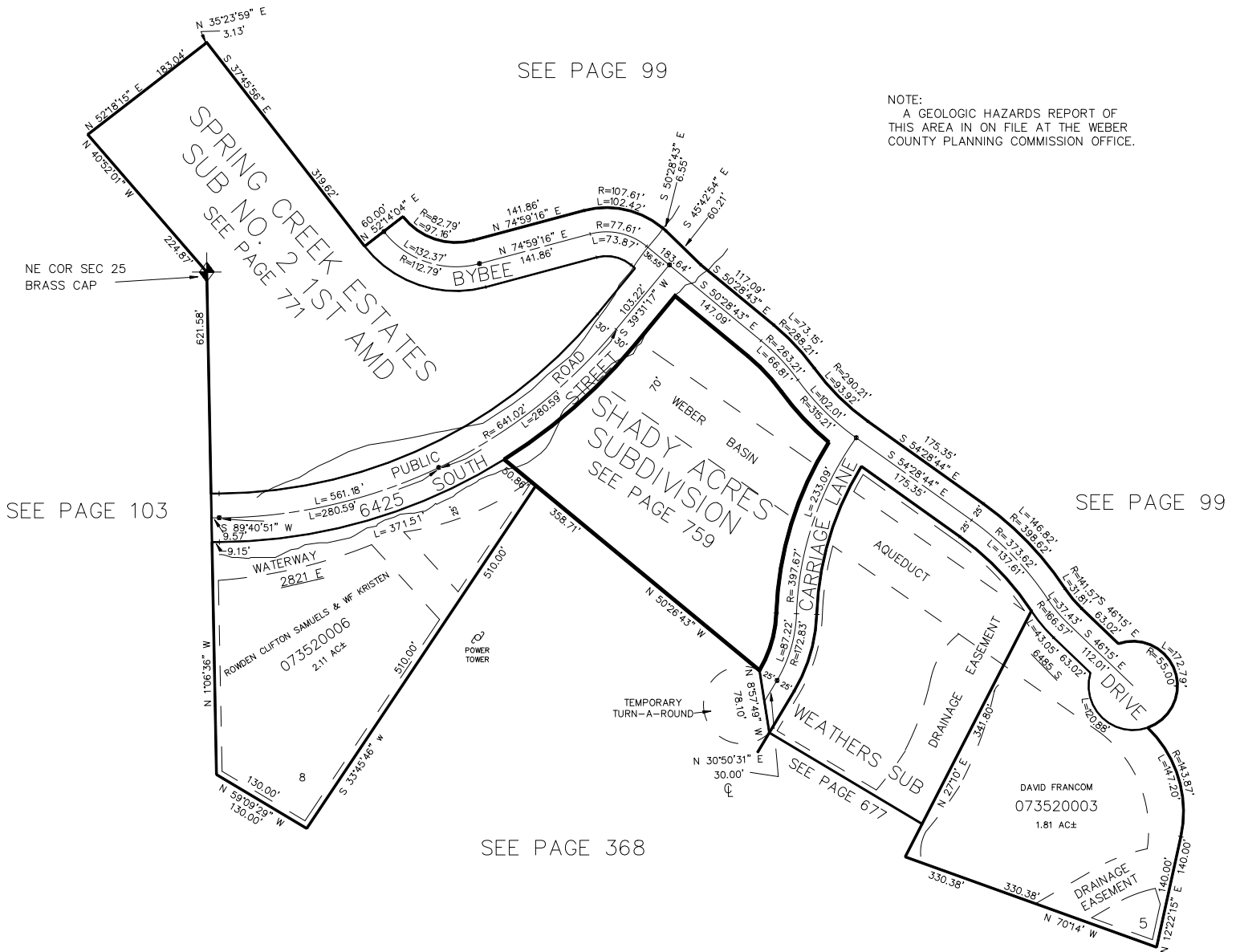
IN WEBER COUNTY

SCALE 1" = 100'

TAXING UNIT: 54

SEE PAGE 99

NOTE:  
A GEOLOGIC HAZARDS REPORT OF  
THIS AREA IS ON FILE AT THE WEBER  
COUNTY PLANNING COMMISSION OFFICE.



\*SEE CORRECTION AFFT.  
3-25-92 (1622-160)

7' UTILITY & DRAINAGE EASEMENTS EACH  
SIDE OF PROPERTY LINES AS INDICATED  
BY DASHED LINES EXCEPT AS OTHERWISE  
SHOWN.

FOR COMPLETE ENG DATA SEE  
ORIGINAL DEDICATION PLAT IN  
BOOK 30, PAGE 89 OF RECORDS.